

Organisational Health (May - July 2022)

Posts filled: 1 x Business Support Officer (Welsh essential) JL
1 x Case Manager – returned from secondment MS
1 x Senior Officer MS

Leavers: Temporary Team Manager NC
1 x Social Worker CS

Vacancies: Prevention Case Manager MH

Current issues/successes: The Quality Assurance Framework has been completed and plans are being made to implement now the management team is at full capacity.

Staff sickness:

Between 01/05/2022 and 31/08/2022 - 7 members of staff have been on sickness leave losing 71 working days, 4 of the 7 were diagnosed with Covid losing 20 days as per the breakdown below: -

- Prevention Team – 1 staff member was absent totalling 24 working days LC
- Case Management Team - 2 members of staff were absent totalling 6 working days MS/CS
- Interventions & Planning Team – 4 members of staff were absent totalling 41 days CC/DC/MS/LNH
- Business Support – no staff were sick during this period



Staff Supervision:

The target is 1 supervisor
83% of planned superv.

Cardiff Youth Justice
Performance
Quarter 1: April - June 2022
(exc. Probation).

The Prevention Manager

- May 22 – 7/10 staff received supervision (100%)
- June 22 – 6/10 staff received supervision, 4 staff members did not receive supervision (6/10 – 60%)
- July 22 – 6/10 staff received supervision, 3 staff members receive bi-monthly supervision (6/7 – 86%)
- August 22 – 9/10 staff received supervision (9/10 – 90%)

Discounting long term absence, 28 of 34 supervision sessions took place (82%)

The Interventions Team Manager currently supervises 10 LA staff and 2 partnership staff:

- May 22 – 11/12 staff received supervision, 1 staff member was off long term (11/11 – 100%)



Gwasanaeth Prawf
Cenedlaethol
National Probation
1 of 16



GWASANAETHAD
CYFIAWNDER IEUENCTID
CAERDYDD
CARDIFF
YOUTH JUSTICE
SERVICES

- June 22 – 9/12 staff received supervision, 1 staff was off long term, 2 staff members receive bi-monthly supervision (9/9 – 100%)
- July 22 – 10/11 staff received supervision, 1 staff was on annual leave (10/11 – 83%)
- August 22 – 9/11 staff received supervision, 2 staff members receive bi-monthly supervision (9/9 – 100%)

Discounting long term absence, **44** of **39** supervision sessions took place **(89%)**

The Case Management Team Manager currently supervises **9** LA staff and **1** partnership staff, although there have been a number of changes during this period, please see below:

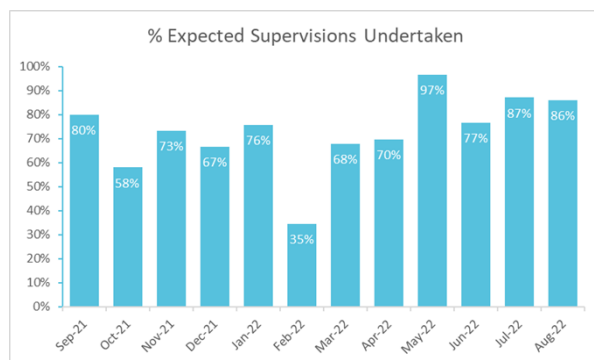
- May 22 – 7/7 staff received supervision, (7/7 - 100%)
- June 22 – 5/7 staff received supervision, (5/7 – 71%)
- July 22 – 6/7 staff received supervision, (6/7 – 86%)
- August 22 – 9/10 staff received supervision (9/10 – 90%)

Discounting long term absence, **27** of **31** supervision sessions took place **(87%)**

Operational Manager currently supervises **5** team managers, 2 managers are supervised bi-monthly, 1 manages the Divert service and the other is focussed on quality assuring:

- May 22 – 4/5 staff received supervision, 1 staff member did not receive supervision, (4/5 -80%)
- June 22 – 3/5 staff received supervision, 2 staff members receive bi-monthly supervision (3/3 –100%)
- July 22 – 5/5 staff received supervision (5/5 – 100%)
- August 22 – 3/5 staff received supervision, 1 staff member was on annual leave and 1 staff member receives bi-monthly supervision (3/4 – 75%)

Discounting long term absence, **15** of **17** supervision sessions took place **(88%)**



The chart opposite has been updated to show staff receiving supervision provided as a percentage of expected supervisions, this **excludes** staff on long term absence.

Local Picture

Data published by the Youth Justice Board for FTE and Re-offending key performance indicators is taken from the Police National Computer (PNC) and collated by the Ministry of Justice (MoJ). Youth Justice Services do not have access to identifiable cohort information and consequently Corporate KPI's and reports to the Management Board are based on locally generated data.

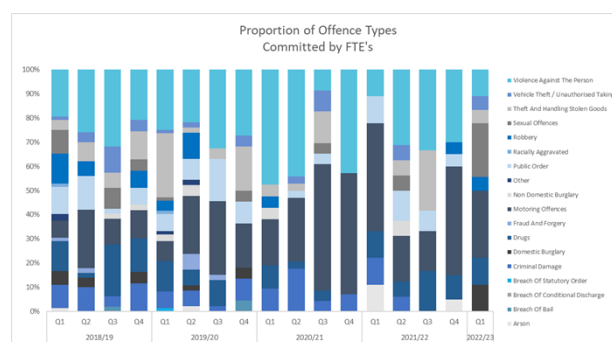
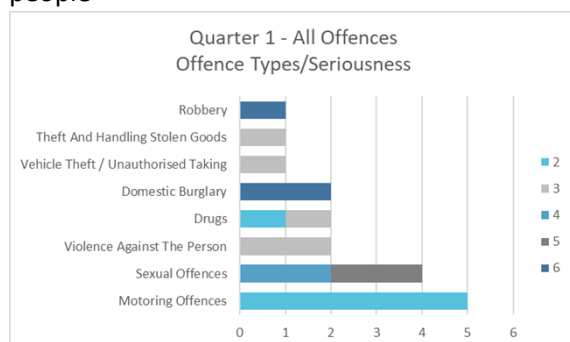
There is a difference in how the re-offending cohort is tracked, locally we track the cohort for 6 months with national data being tracked for 12 months, a further 6 month period to ensure PNC has been updated with any convictions during the 12 month period.

FTE information reported locally includes ALL young people receiving an outcome at court or a caution whereas national data only includes indictable or either way offences, the most common summary offences are driving.

First Time Entrants

	Quarter 1	Previous Quarter	Quarter 1 Previous Year	5 Year Trend
Period	Q1 2022/23	Q4 2021/22	Q1 2021/22	
No. Young People	9	8	7	

- 2 young people were previously diverted from the youth justice system and did not meet the diversion criteria
 - 3 young people were not eligible for diversion due to the offence type such as knife related crime
 - 4 young people were not eligible due to the offence seriousness
 - 3 young people received a first substantive outcome having committed 10/18 (56%) offences.
- 5/18 (28%) offences were for motoring offence type. 61% of offences had a seriousness score of 3 or below, overall range 1-8 with 1 being the least serious. FTE's during Quarter 1 committed an average 2.00 offences. The proportion of offences chart below shows a significant reduction in violence against the person offences (2/18) committed by FTEs and an increase in the proportion of sexual offences (4/18) committed by 2 young people



Re-offending

	Quarter 4	Previous Quarter	Previous Year	3 Year Trend
	Apr-Jun 2022	Jan-Mar 2022	Apr-Jun 2021	
No. young people	9	13	29	
No. of re-offenders	2	3	8	
Re-offending rate	22.2%	23.1%	27.6%	

The cohort of young people receiving a substantive outcome during July - September 2021 has been tracked for 6 months to March 2022. During Quarter 4 - 9 young people were included in the cohort with 2 young people re-offending committing a further 5 offences, 4 of which were committed by 1 young person. The

outturn shows a significant reduction in the number of young people in the cohort when compared to the previous year

Use of Custody

	Quarter 1	Previous Quarter	Previous Year	5 Year Trend
	Apr-Jun 2022	Q4 2021/22	Q1 2021/22	
No. custodial sentences No. young people	2 2	1 1	0 0	<p>Line graph showing the 5-year trend for custodial sentences and young people. The blue line represents the number of custodial sentences, and the grey line represents the number of young people. Both lines show a general downward trend from 2018 to 2022, with a slight increase in 2022.</p>
No. of yp remanded in custody No. of new remand episodes	5 1	5 4	2 2	<p>Line graph showing the 5-year trend for young people remanded in custody and new remand episodes. The blue line represents the number of young people remanded in custody, and the grey line represents the number of new remand episodes. Both lines show a general upward trend from 2018 to 2022, with a slight decrease in 2022.</p>

Sentenced

During Q1 2 young people received custodial sentences both of whom were co-defendants. Both young people were remanded in custody prior to being sentenced and will turn 18 during their time in custody.

Remanded

5 young people were on remand in custody during the period:

- 2 young people were sentenced as outlined above
- 1 young person turned 18 whilst awaiting sentencing, receiving a custodial sentence for a serious violent offence
- 1 young person received a community penalty for driving offences
- 1 young person received a custodial sentence during August for a significant number of offences

Welsh Devolved Indicators

13 young people concluded 13 statutory community interventions with 1 young person concluded 2 custodial sentences.

Education Training & Employment

ETE Indicators in YDS Welsh Indicator Summary Tab						
School age	Community Penalties			Custodial Sentences		
Number of interventions closing	3			0		
Of the above	Start	Review	End	Start	Review	End
Average no. of hrs ETE offered per YP	18.3	25.0	21.7	#DIV/0!	#DIV/0!	#DIV/0!
Average no. of hrs ETE attended per YP	15.0	14.7	13.3	#DIV/0!	#DIV/0!	#DIV/0!
% change (Start/end - attended)	-11.1%					
Above school age	Community Penalties			Custodial Sentences		
Number of interventions closing	9			2		
Of the above	Start	Review	End	Start	Review	End
Average no. of hrs ETE offered per YP	11.0	9.6	12.3	0.0	0.0	0.0
Average no. of hrs ETE attended per YP	10.4	9.0	21.8	0.0	0.0	0.0
% change (Start/end - attended)	108.5%			0.0%		
School age at start/ above school age at end	Community Penalties			Custodial Sentences		
Number of interventions closing	1			0		
Of the above	Start	Review	End	Start	Review	End
Average no. of hrs ETE offered per YP	25.0	0.0	0.0	#DIV/0!	#DIV/0!	#DIV/0!
Average no. of hrs ETE attended per YP	17.0	0.0	0.0	#DIV/0!	#DIV/0!	#DIV/0!
% change (Start/end - attended)	-100.0%					

School Age – 2 of the **3** young people were placed at Bryn Y Deryn School and Student Support Unit whilst engaging with the YJS. 1 young person had a significant increase in the number of hours offered from 5, when EOTAS, to 25 at Bryn y Deryn and the other having a reduced timetable from 25, at Llanishen High School, to 15 hours offered at Bryn Y Deryn.

School age at start/above school age at end – 1 young person was in full-time education at the start of their intervention and was in the process of job seeking with the support of Careers Wales at the end of their intervention.

Above School Age (Community) – There has been an improvement in the number of hours offered to this cohort relating to 1 young person who concluded a modern apprenticeship and after a short period of unemployment secured full time employment.

Above School Age (Custodial Sentence) – 1 young person concluded 2 custodial licence interventions after re-offending, they turned 18 and were transferred to Probation, there was no change in this young person's ETE status throughout their order.

Accommodation

Accommodation Indicators in YDS Welsh Indicator Summary T	
Number of yp with a closed community penalty	14
Suitable accommodation before the start	13
Suitable accommodation at the end	13
% change - Community Penalties (start/end)	0.0%
Number of yp with a closed custody sentence	2
Suitable accommodation start of custody sentence	2
Suitable accommodation start of license	2
% change - Custody Sentences (start/end)	0.0%

% Change – Community Penalties 0% (14)

12 of the 14 young people were in suitable accommodation at the beginning and the end of their intervention.

- 1 young person was in suitable residential care at the start of their intervention, however, at the end they had returned to their home address which was deemed unsuitable by YJS.

- 1 young person was in unsuitable accommodation at the beginning of their intervention as they were accommodated in a self-contained flat out of the Cardiff area, at the end of their intervention they were in custody which is deemed suitable.

% Change – Custody 0% (2)

1 young person concluded 2 custodial sentences and was in suitable accommodation at the beginning, release and intervention end, having been in custody at the start and end of their intervention and in a residential unit and supported accommodation when released on the separate licences.

Substance Misuse

Substance Misuse Indicators in YDS Welsh Indicator Summary Tab	
Number identified via screening requiring a SM assessment	9
Number commencing a SM assessment	7
Number commencing a SM assessment within 5 days of referral	6
% commencing a SM assessment within 5 days of referral date	85.7%
Number of young people identified through assessment requiring treatment	6
Number receiving a Tier 2,3 or 4 Service within 10 days of SM assessment	6
% receiving a Tier 2,3 or 4 Service within 10 days of SM assessment	100.0%

% Commencing a SM assessment within 5 days of referral date

6 of the 7 young people referred for an assessment were assessed within 5 days.

% Receiving Tier 1, 2, 3 or 4 Service within 10 days of assessment

All young people assessed as requiring a service and agreed to engage received it within 10 days of the assessment being completed.

2 young people were identified via the screening process as requiring an assessment,

- 1 young person was referred but refused to engage with the service
- 1 young person was assessed but withdrew from the process

Mental Health

Mental Health Indicators in YDS Summary Welsh Indicator Tab	
Number identified via screening requiring MH assessment	6
Number commencing a MH Assessment	1
Number commencing MH assessment within 28 days of referral date	1
% commencing MH assessment within 28 days of referral date	100.0%
Number of young people identified through assessment requiring treatment	0
Number receiving a Tier 2, 3 or 4 Service within 28 days of MH Assessment	0
% receiving a Tier 2, 3 or 4 Service within 28 days of MH Assessment	#DIV/0!

% Commencing a MH assessment within 28 days of referral date

1 young person was referred for an assessment during this period which was undertaken within the 28 days.

% receiving a Tier 2, 3 or 4 service within 28 days of MH assessment

9 of the 14 young people concluding a statutory intervention identified mental health concerns when assessed using Asset+, 1 of whom was assessed and engaged in a brief psychological intervention. Please see below outline of engagement with the remaining young people:-

- 5 young people were referred but did not engage, however they had/were engaged with CAMHS
- 1 young person concluding 2 custodial interventions was screened by the YJS CAMHS health worker who outlined a formulation to support resettlement having Community Paediatrics input.
- 1 young person was looked after and receiving statutory health input
- 1 young person struggling with grief was not referred for consultation

Divert

Serious Youth Violence

The number, rate and proportion of serious youth violence offences, Year ending March 2020 to Year ending March 2022.

Cardiff	Latest 12 months Year ending March 2022	Year ending March 2021	Change	Year ending March 2020	Change
No. SYV offences	6	10	-4	38	-32
Rate of SYV offences	1.8	3.1	-1.2	12	-10
Proportion of SYV offences	5%	5%	0.3pp	9%	-3.3pp

Key messages

No. SYV offences

In the year ending March 2022 there were 6 serious youth violence offences committed by children from Cardiff. This is a decrease of -4 compared with the previous year.

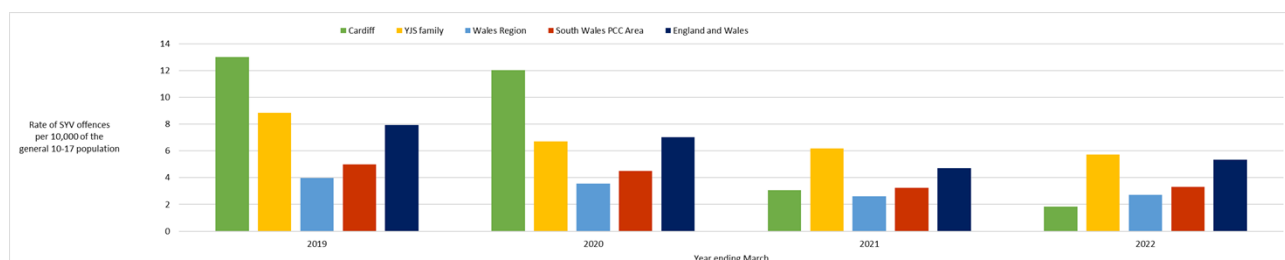
Rate of SYV offences

In the year ending March 2022 the rate of serious youth violence per 10,000 children aged 10-17 was 1.8 for Cardiff. This is a decrease of -1.2 compared to the previous year.

Proportion of SYV offences

In the year ending March 2022 serious youth violence offences comprised 5% of all offences for Cardiff. This is an increase of 0.3pp compared with the previous year.

The rate of serious youth violence offences per 10,000 children aged 10-17 by YJS, YJS family, YJS region, PCC area and national average, Year Ending March 2019 to 2022



Ethnic Disparity

Ethnic Disparity data published by the YJB

	White	Mixed	Asian or Asian British	Black or Black British	Other	Ethnic minorities (exc. White minorities)
10-17 mid 2011 population by ethnicity	80%	5%	9%	3%	3%	20%

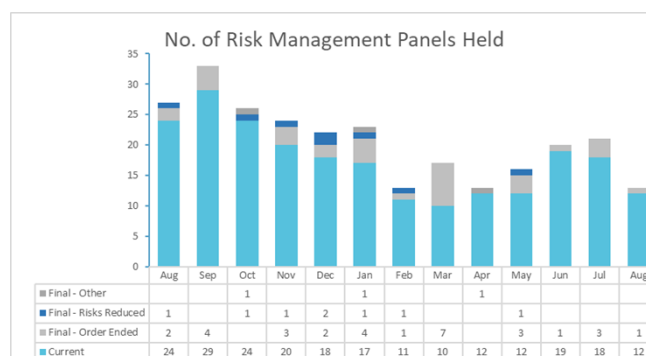
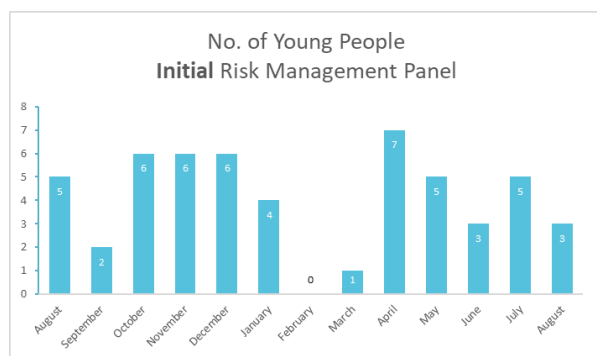
April – June 2022 Offending Population by ethnicity	84%	4%	0%	8%	4%	16%
April – June 2022 Ethnic breakdown of custodial sentences	100%	0%	0%	0%	0%	0%

Youth Justice Service and Children's Services Scorecard – September 2022

Risk Management Panels (RMP)

During August there have been:-

- **4** referrals to RMP
- **13** Risk Management Panels
- **18%** (22/121) of all young people open to YJS were ongoing at the Risk Management Panels
- **1** young person concluded RMP who were under review for **3.1** months.



Number/percentage of cases referred to Risk Management Multi Agency Strategy Meeting with Child Sexual Exploitation (CSE)/Child Criminal Exploitation (CCE) concerns

86% (19/22) cases ongoing at RMP include CSE/CCE

4/4 referrals made in August had CSE/CCE concerns

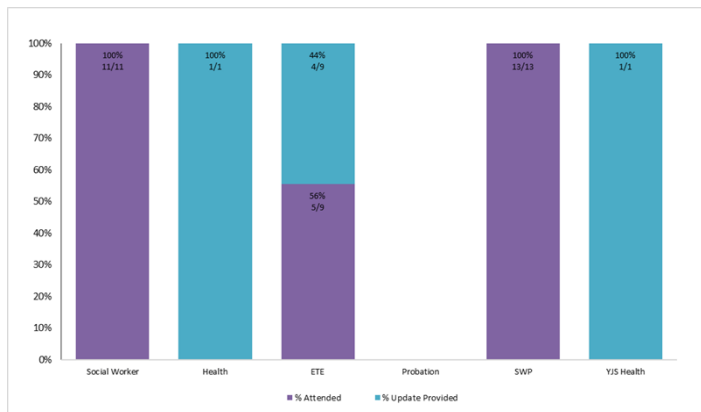
Number of cases reviewed at High Risk Panel

3/3 cases being reviewed at HRP in August open to YJS

0 cases currently being reviewed have been re-referred

0 cases open to YJS were referred during August

Number/percentage of partner agencies attending Youth Justice Service Risk Management Panels



As shown on the chart opposite ALL relevant parties have either attended RMP meetings or provided an update.

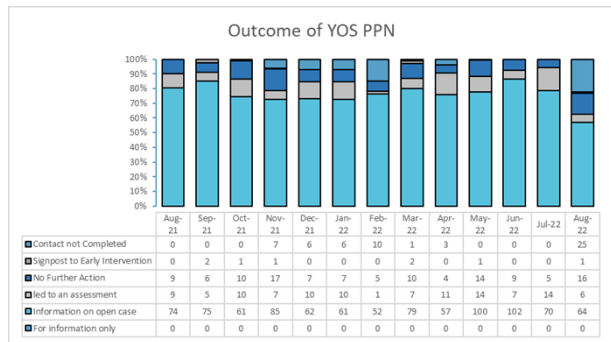
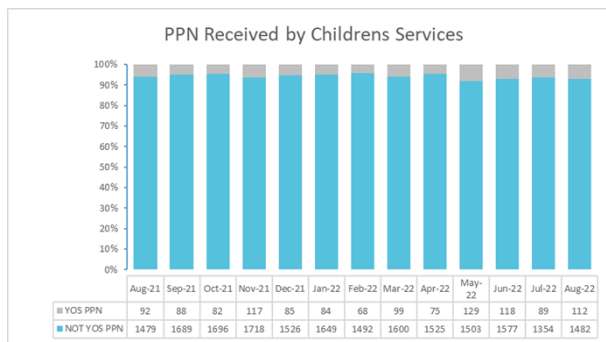
Number of closed cases audited

A target of 1 case per team manager per month to be reviewed after case has closed, 80% (33/41) cases audited to date.

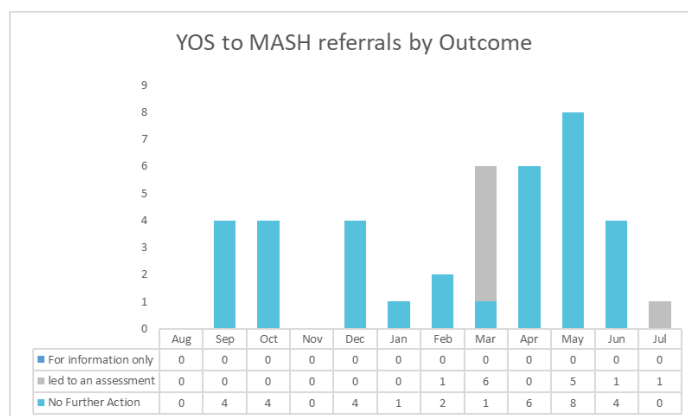
The QA Framework has been reviewed and will be implemented when the case management team is at full capacity from October.

Number of Public Protection Notice's with outcome of YJS referrals

The average of 6% of all PPNs relate to YJS. There has been a 5% increase in the number of YJS specific PPNs which is significantly below the 16.8% overall increase of PPNs received during 2022.

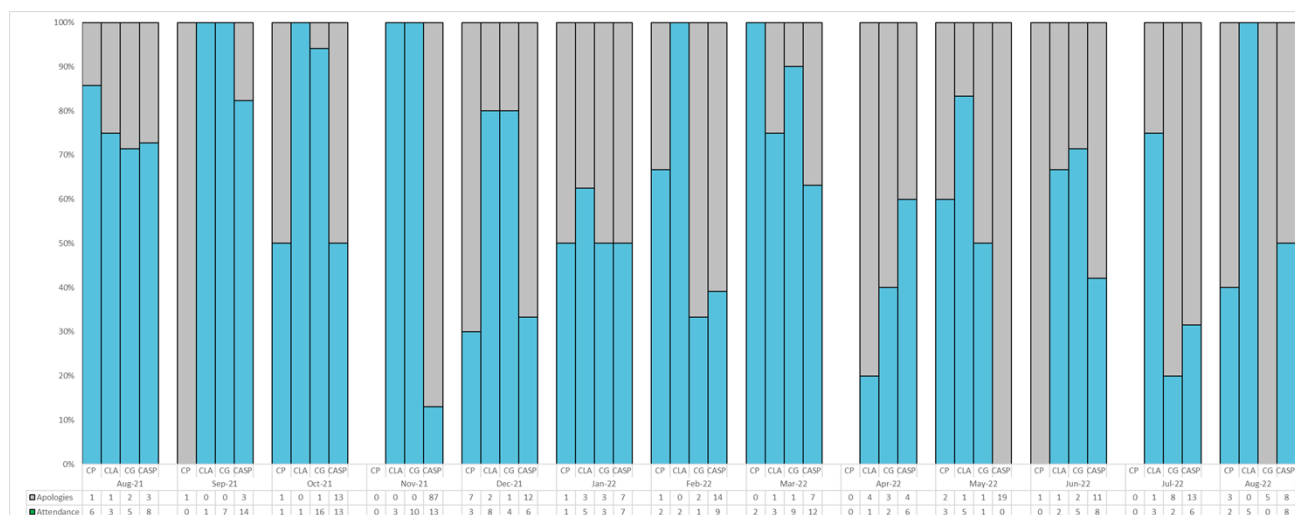


Number / percentage of cases referred to the MASH by YJS by outcome (assessment / no further action)



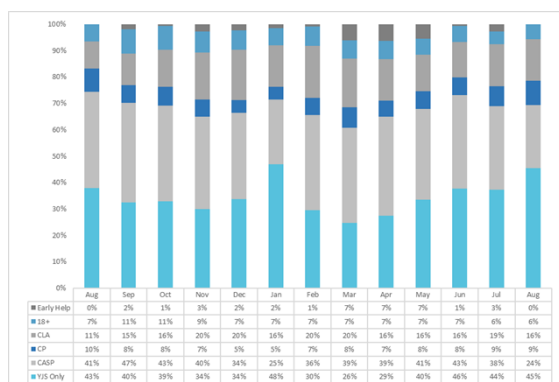
There have been 24 referrals from the YJS to MASH during Q1, 75% of which have resulted in no further action.

YJS Attendance at Children's Services Statutory Meetings

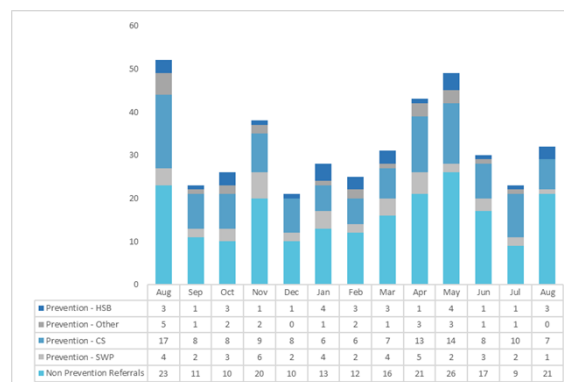


YJS/CS Caseload and Referrals into YJS

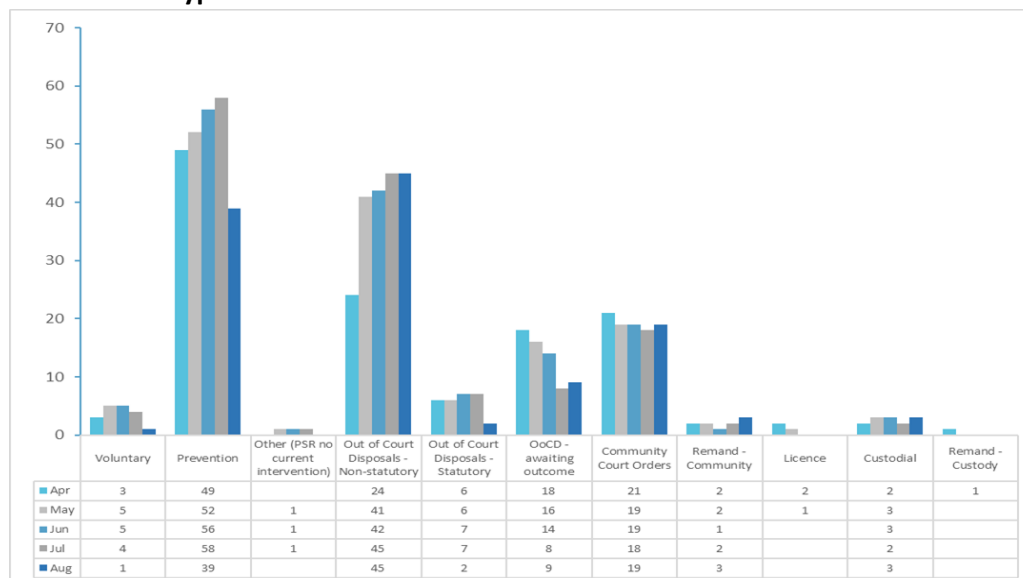
YJS/CS Caseload



Referrals Into YJS

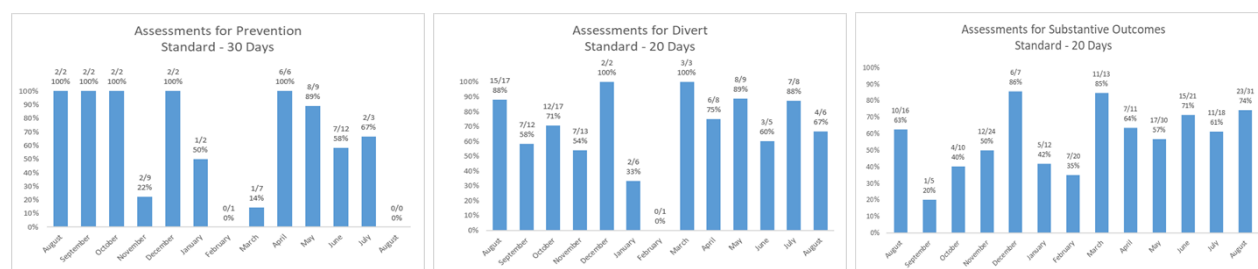


Intervention Types



Timeliness of ASSET+ Assessments - Standard 20 Working Days

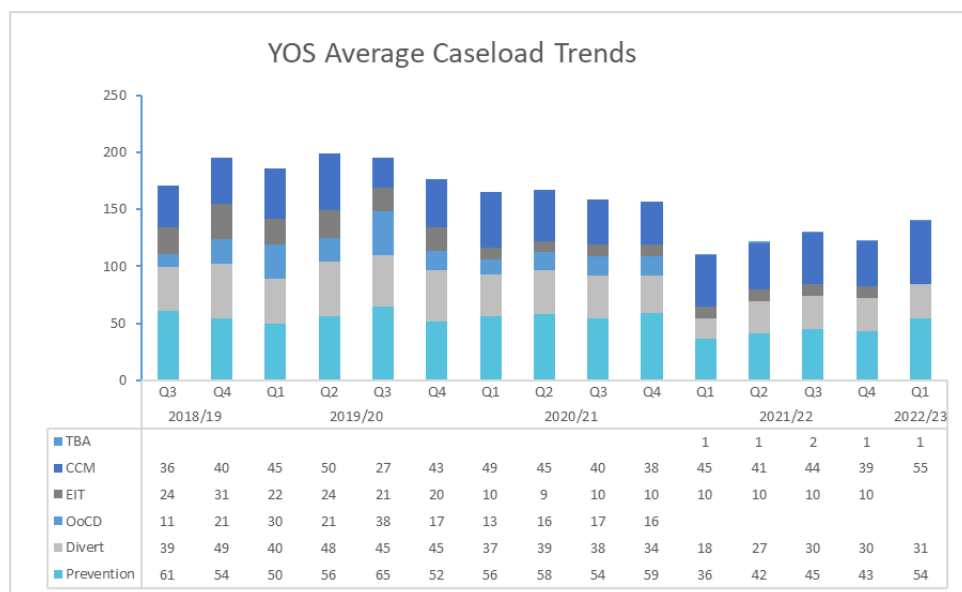
As at 12/09/2022 **40** Asset+ assessments were in progress for an average of **17** working days with 22 in progress with the case manager and 18 awaiting countersigning.



Average number of working days to complete assessments

Year	Apr	May	Jun	Jul	Aug	Sep	Oct	Nov	Dec	Jan	Feb	Mar	Total Avg.
2021/22	22	20	25	13	22	36	29	44	10	24	35	32	26
2022/23	16	21	24	21	23								21

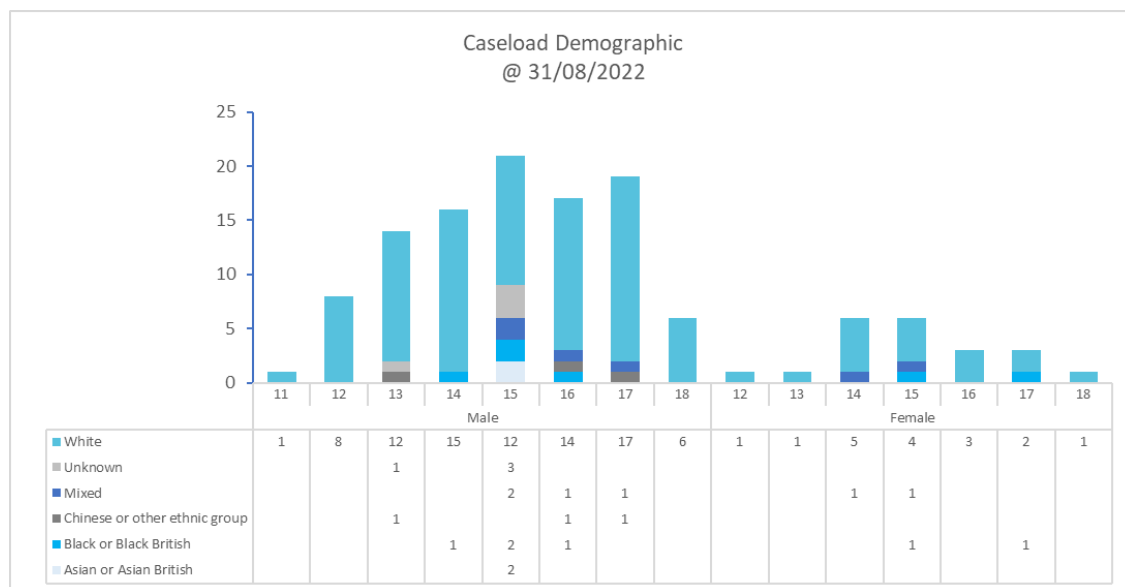
Caseload



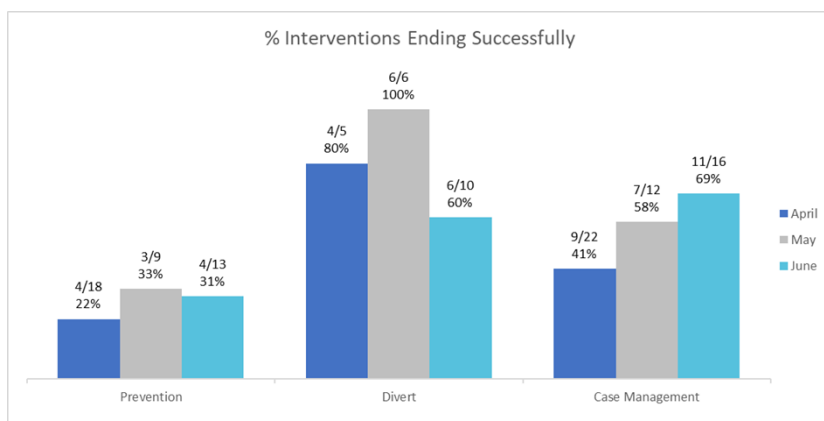
Since the changes to the caseload reports which is now divided between three teams, the increased caseload for Case Management is apparent where Early Intervention and Out of Court Disposals agreed at bureau have been incorporated.

The average quarterly YJS caseload since April 2021 is 141 young people an increase from 130 reported in Quarter 4. The trend chart shows an increase in the average number of young people supervised by YJS during Q1.

The caseload demographic of the 123 young people open @ 31/08/2022 is outlined below:-



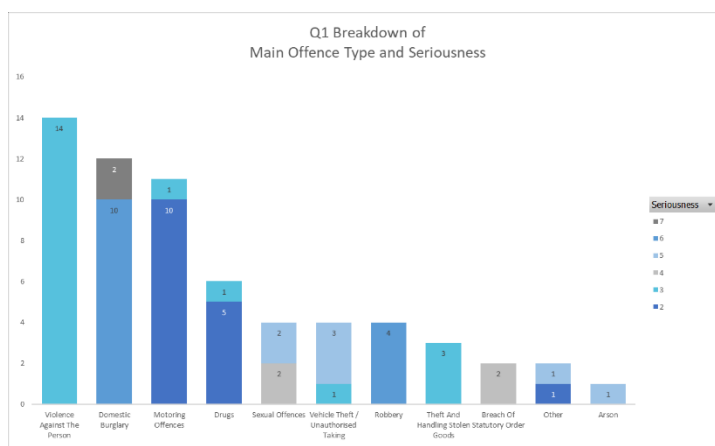
69% of the overall caseload are diversionary interventions (includes Prevention & YRD's) with 7% of young people awaiting a decision at bureau which could also be a diversion from the criminal justice system.



Of the overall 111 interventions ending during the period 55 (50%) ended successfully. Those interventions referred by the police for diversionary/substantive outcomes show 61% were successful.

The chart opposite shows main offences convicted or receiving a caution. 13 young people received a court outcome 2 of which received a custodial sentence. 7 young people received a caution.

57% of all offences had a seriousness score of 2 or 3, (1 being the lowest and 8 the highest). During Q1 there has been a significant increase in the number of serious offences with 23/63 (37%) score between 5-7. 10 young people committed the 23 offences with 1 young person convicted of 10 domestic burglaries.



There has been a significant increase in offending during Quarter 1.

Period	No. of Young People	No. of Offences	Average Offences per Young Person
Quarter 1 – 2021/22	14	17	1.88
Quarter 2 – 2021/22	18	32	1.21
Quarter 3 – 2021/22	13	22	1.69
Quarter 4 – 2021/22	17	41	2.41
Quarter 1 – 2022/23	25	63	2.52

Weekly Briefings

Weekly briefings were introduced at the YJS at the beginning of 2021 to assist with the implementation of new policies and procedures and also highlight and share good practice. Staff members volunteered to review new policies and disseminate salient messages at these meetings.

Sessions are kept to approximately 30 minutes and were initially weekly but have since reduced to fortnightly. All sessions are recorded for those members of the team not able to attend. Briefing sessions were suspended during the summer holiday period to accommodate staff leave:-

- Q1 Bureau Process
- Q1 Interventions (Referral Process)
- Q1 YJS and Children's Services MOU
- Q1 Trauma Informed Practice
- Q2 Safe
- Q2 People Safe

YJB Published Comparison Data Quarter 1 – April – June 2022

Green arrows = improvement

Red arrows = deterioration

Amber = static/the same



Directional arrows = increase (up)/reduction (down) on previous period

National and Welsh Indicator Performance	Cardiff		S. Wales Comparison to Cardiff YJS		Wales Comparison to Cardiff YJS		YJS Family Comparison to Cardiff YJS		Core City Comparison to Cardiff YJS	
	Previous Year	Latest Period								
Number of FTE per 100,000 population of 10 to 17 year olds (April 21 – March 22)	83	↓ 71	●	82	●	113	●	159	●	194
Proportion of Offenders who Re-offend NO INFORMATION AVAILABLE										
Frequency of Reoffending – Number of Offences per Offender NO INFORMATION AVAILABLE										
Reoffences per reoffenders after 12 months NO INFORMATION AVAILABLE										
Rate of Custodial Disposals per 1,000 population of 10 to 17 yrs (April 21 – March 22)	0.12	↑ 0.18	●	0.08	●	0.06	●	0.16	●	0.21
% Change in average No. of ETE hours for school age YP at end (April 22 – June 22)	0.0%	↓ -11.1%	●	-25.0%	●	-7.0%	N/A	N/A	N/A	N/A
% Change in average No. of ETE hours for 16 plus age YP at end (April 22 – June 22)	-33.6%	↓ 108.5%	●	53.6%	●	47.1%	N/A	N/A	N/A	N/A
% Change in YP in suitable accommodation by end of YOT community (April 22 – June 22)	0.0%	↔ 0.0%	●	2.9%	●	1.3%	N/A	N/A	N/A	N/A
% Change in YP in suitable accommodation by end of YOT custodial (April 22 – June 22)	0.0%	↔ 0.0%	●	0.0%	●	0.0%	N/A	N/A	N/A	N/A
Proportion of children requiring substance misuse assessment starting in 5 days (April 22 – June 22)	50%	↑ 86%	●	93%	●	96%	N/A	N/A	N/A	N/A
Proportion of children requiring substance misuse treatment starting in 10 days (April 22 – June 22)	100%	↔ 100%	●	100%	●	100%	N/A	N/A	N/A	N/A
Mental health assessment within 10 days of sentence (April 22 – June 22)	N/A	↑ 100%	●	100%	●	100%	N/A	N/A	N/A	N/A
Mental health service within 28 days of assessment (April 22 – June 22)	N/A	↔ N/A		50%		80%	N/A	N/A	N/A	N/A